



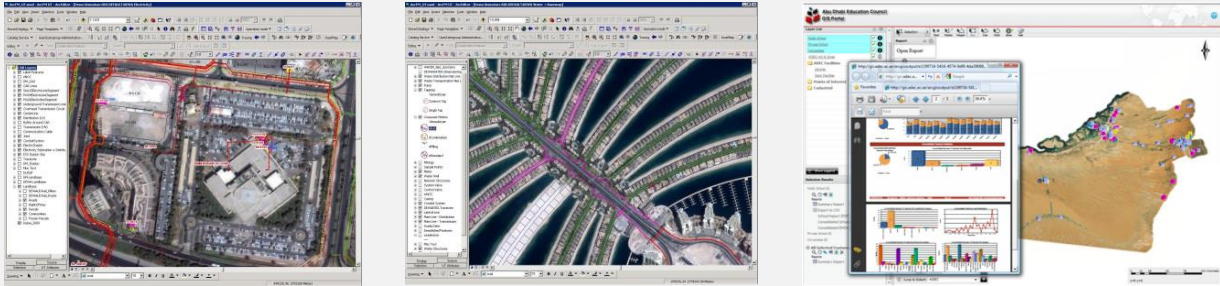
esri Official
Distributor

Company Profile



GIS is an integral part of today's information systems

GIS delivers real value when integrated with traditional enterprise business data and applications to solve real-world problems. Location, as a primary element of corporate databases, permeates enterprise IT systems in human resources, finance, marketing, and logistics. GIS technology weaves together and integrates disparate business systems using location as the common factor.



gistic leverages GIS information within dynamic business processes. We can spatially enable your existing or planned business applications such as Enterprise Resource Planning, Customer Relationship Management, Asset Management, Maintenance Management, and Human Resource Systems. Our extensive GIS implementation experience ensures that the solutions we implement are future-proof.

Products from world-leading GIS companies

gistic collaborates with leading software vendors and data providers to offer our customers the most modern and comprehensive selection of geo-spatial solutions worldwide. We currently distribute:

- GIS and mapping software from Esri, the worldwide leader in GIS software
- Advanced geospatial imaging software for photogrammetry and remote sensing from PCI Geomatics
- Image classification and object-based image extraction solutions from ecognition – Trimble
- GIS applications for Utilities and Land Management from AED-SICAD
- Internet mapping software ArcGIS Server from Geocortex
- Telecom network planning and engineering solutions from Ericsson
- Spatial ETL software to extract, transform, and load spatial data in many GIS, CAD, raster, and database formats from Safe Software
- Wireless networks planning and managing solutions from HNT-BALTIC
- Spatial Data Infrastructure solutions from con terra
- Road map data from HERE

gistic does not just sell software products but develops solutions to meet the unique business requirements of its customers. In order to provide a one-stop shop to the customers, we also deliver integrated turnkey systems including high-end DBMS software, advanced server hardware, large format digitizers & plotters, and high-resolution satellite imagery.



GIS-enable your organization

gistec is a professional services company specializing in the development of intelligent, enterprise-wide geo-spatial data solutions for clients in a variety of disciplines and industries. It has different groups providing a variety of services for customers.

GIS Consulting

The consulting services address every phase of the GIS life cycle to offer solutions within a variety of different application areas. gistec's team of experienced GIS professionals supports needs assessment, database design, system architecture design, implementation planning, and project management.

Database Services

This includes geodatabase design, data automation, data conversion, and quality assurance services. gistec has extensive experience in CAD to GIS data conversion and ensures that high-quality data is made available to the GIS application. Its data conversion procedures include automated creation of feature connectivity, recognition of closed areas, reconciliation of discrepancies, error detection & reporting, and validation of exported data to the specific requirements of the target system.

Satellite Imagery

gistec offers image-processing services to get the most out of geographic imagery. These include radiometric and geometric correction, ortho-rectification, and multispectral classification. Along with its business partners gistec also provides thematic mapping services in applications such as land use/land cover mapping, vegetation cover mapping, soil mapping, drainage mapping, and geological mapping.

Applications Development

The services offered cover application design, development, prototyping, testing, and documentation. gistec has excellent skills in developing solutions utilizing leading-edge technologies from Esri, IBM, Microsoft, Oracle, and other companies. Its team of developers specializes in creating desktop as well as web applications using ArcEngine, ArcPad, ArcIMS, and ArcGIS Server.

Server and Web GIS

With the advances in web technology there is a focused movement toward server-side spatial processing and data management. With a GIS-enabled portal you can consolidate your enterprise

applications into a single, web-based view. Portals offer a compelling means of integrating and consolidating disparate IT systems. When properly implemented, applications hosted on a variety of computing platforms, databases, and development languages coalesce within a web portal, creating a single, secure point-of-entry into the enterprise knowledge base. Our unmatched services include centralized spatial data management, web/application integration, and applications connectivity.

Training

gistec offers a range of authorized training courses to those who wish to fully utilize the capabilities of a GIS. We offer training opportunities to enhance and broaden GIS skills and to keep skills current with the latest technology and software developments. Training courses are offered at the gistec Training Facility or on-site at customer premises. gistec has well-equipped training labs consisting of powerful workstations with large monitors connected to dedicated servers to conduct advanced training courses involving data, applications, and web servers.

Industries Served

- Defense and Intelligence
- Education
- Facilities Management
- Federal Government
- Municipalities
- Oil and Gas
- Public Safety
- Public Works
- Real Estate
- Telecom
- Transportation
- Urban and Regional Planning
- Utilities
- And more

gistec Training Center

gistec Training Center, located in our offices in Sharjah, is a designated Esri Authorized Learning Center. Since its inception, gistec Training Center has trained more than 5,000 individuals from various government agencies and private companies in the UAE and GCC countries.

The training center offers over 200 training courses each year the majority of which are introductory and advanced training courses on Esri GIS software. gistec Training Center uses current training materials from Esri so students are

ensured that they will be taught on the latest software release. Each training course is taught by an Esri authorized instructor and students earn an internationally recognized Esri student certificate on completion of the course.

The training center also provides training courses on remote sensing and photogrammetry (PCI Geomatica), facilities management (ArcFM UT), spatial ETL (SAFE FME), and web-based GIS (Geocortex), among others. For more details, visit www.gistec.com/training.

gisworx

gisworx is our proactive technical support delivery mechanism. This annual event provides a unique in depth learning environment on different aspects of GIS to both beginners as well as advanced users through several technical workshops on focused topics. Details are available at www.gisworx.ae.

EGI Awards

gistec has instituted Excellence in GIS Implementation awards to promote innovation and experimentation in the area of GIS execution and to honor outstanding GIS implementation programs. These awards are offered in distinct categories and are presented annually at the gisworx event. The unique characteristics of the GIS implementation of previous years' award winning organizations are showcased at www.gisworx.ae/egi.

GIS Career Forum

gistec established to spread awareness among UAE Nationals about GIS technology and the opportunities that abound in the field. The event features GIS workshops, presentations about GIS technology and careers, and an exhibition by government organizations about their GIS implementation programs and GIS career opportunities. Visit event website www.giscareerforum.com for more information.



1608 Al Batha Tower, 283 Corniche Street, PO Box 5026
Sharjah, United Arab Emirates
T: +971 6 575 0055 F: +971 6 575 0404 E: info@gistec.com
www.gistec.com | my.gistec.com

SHARJAH | ABU DHABI | DUBAI | AMMAN